

TIBCO BPM Enterprise

The cloud-native digital process automation platform for process and case management apps

Benefits

Cloud-Native Engine

Supplies a containerized, scalable runtime engine with support for any CNCF certified Kubernetes for seamless deployment, management, and upgrades.

Rapid and Easy Process Design

Provides a 100% model-driven environment to simplify process design, shielding implementation complexity with a fast, iterative, collaborative approach for creating, deploying, and testing process and case management solutions.

Support For All Styles Of Processes In A Single Solution

Handles your human and system integration processes, human workflows, dynamic and event-driven processes, case management, to-do lists, and approval processes in a single platform.

Enabling CoE For Digital Process Automation Strategy

TIBCO BPM Enterprise software is the next generation of the TIBCO ActiveMatrix BPM solution. It enables the center of excellence (CoE) to execute on the digital process automation (DPA) strategy at scale for aligning to business transformation needs. Evolving from its deep roots in business process management (BPM) and dynamic case management (DCM), it provides a low-code, model-driven environment for rapid development of process and case management applications. The new cloud-native runtime enables seamless deployment and management in your choice of Kubernetes-based private, public, or hybrid cloud environment at scale.

Digitalize! Don't Just Automate

To innovate business operations and extend business value, it is important to both automate existing processes and digitize them. That way, you can take advantage of new disruptive trends like Cloud, APIs, event-driven design, and RPA. TIBCO BPM Enterprise software automates processes to make them flexible enough to react to the right business events in real time — and support dynamic work delivery, ad hoc activities, elastic organizations, and dynamic process invocation so you can truly digitize your business, not just automate it.

Business Independence

Alleviates IT involvement in day-to-day changes. Business users can adjust and change their operations immediately to take advantage of opportunities or avoid threats.

Built For TIBCO Responsive Application Mesh

Embodies the vision of TIBCO Responsive Application Mesh for building modern architecture on a foundation of cloud-native, API-led, event-drive, and open-platform principles.

Business Friendly With Enterprise Strength

With the TIBCO BPM Enterprise solution, your core business process solutions meet the same stringent security, performance, reliability, scalability, and availability requirements as any of your other mission-critical applications in your private cloud environment.

The solution provides flexible, intuitive, and business friendly functions with the industrial strength necessary to meet the demanding technical standards required for mission-critical enterprise needs.

Empowering The Business

TIBCO BPM Enterprise software unleashes your workforce's full potential with Intelligent Work and Resource Management (IWRM)—a combination of organizational transparency and flexibility, model-driven process patterns, diverse work delivery methods, skills-based routing, and interactive business intelligence. These capabilities can be mixed and matched to achieve your business goals and introduce entirely new ways to drive innovation and business transformation.



Cloud-Native Enterprise Mission Critical Deployments

You get true cloud-native deployment options with support for Kubernetes-based container orchestration systems for horizontal scaling, load balancing, and self-healing with enterprise level reliability. It can easily scale from departmental installations to tens of thousands of users running thousands of different types of processes in parallel in a highly available deployment in your choice of CNCF certified Kubernetes environment.

Features

Flexible and Independent Organizational Models

Organizational models allow business managers to change their organization's structure and the roles, groups, skills, and privileges of their people, for an immediate effect on active process instances and work availability.

Elastic Organizations

Organizational structures can expand and contract regularly, such as retail branches. A business process can resolve which branch it applies to at runtime.

Process Patterns

Built-in model-driven support for common business patterns decreases process design time and eliminates the need for complex code or rules.

Case Management

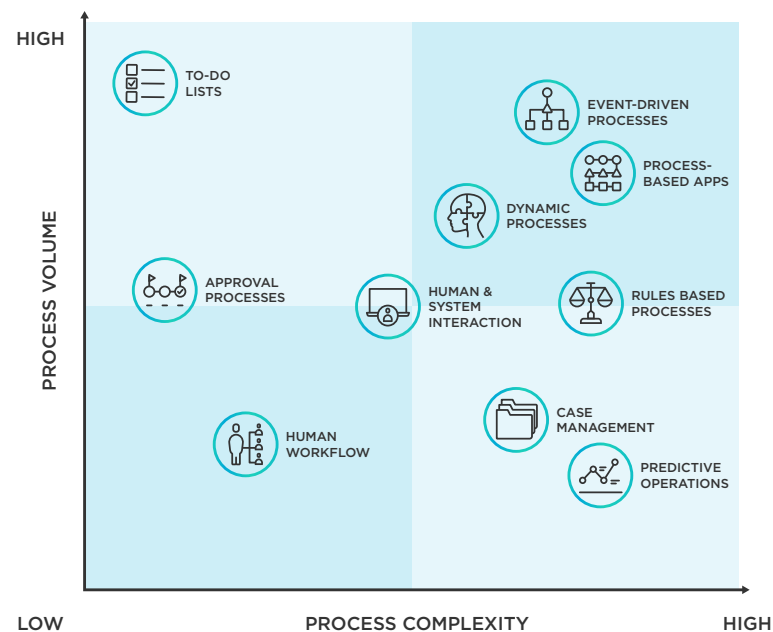
Case data is combined with out-of-the-box ad hoc activities, dynamic routing & process invocation, case states & actions, and case document integration, providing a full-featured case management solution.

Ad Hoc Activities

Ad hoc activities can extend or alter processes by allowing tasks or sub-processes unattached to a process flow to be activated after business preconditions are met. These activities can be activated manually or automatically.

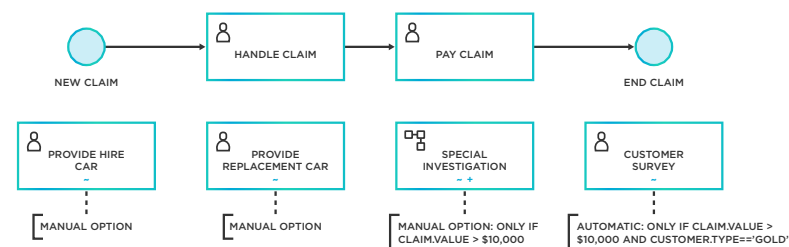
The Complete Spectrum Of Process Styles In A Single Solution

The ways in which businesses operate have evolved, causing development of several styles of automated processes to better address changing needs. TIBCO BPM Enterprise software, along with other capabilities provided by the TIBCO Connect product line, provide unparalleled flexibility in many areas of process automation, allowing you to cover the complete spectrum of process styles in a single process automation platform.



Processes That Conform To Business Requirements, Not The BPMS

With its completely model-driven TIBCO Business Studio design-time environment, TIBCO BPM Enterprise software accommodates the full spectrum of business process styles, requirements, and use cases.



Attributes and Capabilities

Compose Your Processes For Change

Today, your organization must proactively prepare itself for rapid change and innovation. TIBCO BPM Enterprise software lets you compose business processes for change rather than a prescriptive predesigned path. It allows both people and systems to compose and arrange the best process for the current situation on-the-fly. This is achieved by combining dynamically invoked processes, ad hoc activities, independent work routing & distribution, and event-driven processes.

Case Management

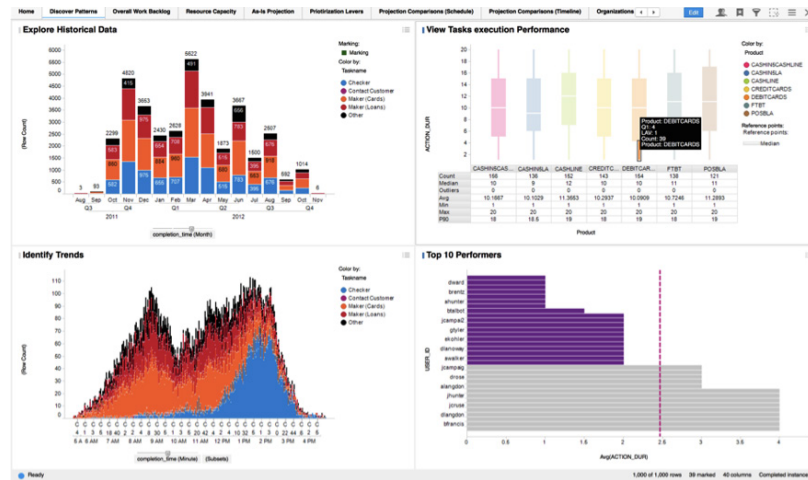
Case data can be modeled in TIBCO Business Studio environment, which is then created and administered by the TIBCO BPM Enterprise system. Case data is stored independently of the business processes that interact with it, allowing it to maintain a different lifecycle and separate audit trail from those processes. The case data is easily accessible and not obscured. It is available to be read by any analytics or reporting tool, as well as through TIBCO BPM Enterprise APIs. This accessibility allows case management to become the central focus. Case data is combined with out-of-the-box ad hoc activities, dynamic routing & process invocation, case states & actions, and case document integration, providing a full-featured case management solution.

Ad Hoc Activities

Ad hoc activities can extend or alter processes or cases by allowing tasks or subprocesses unattached to a process' defined flow to be activated after business preconditions are met. (For example, a claim over \$10,000 submitted by a Gold level client might be a precondition.) This allows knowledge workers or external events to activate activities on the fly—of course within the defined high-level business rules and regulations. TIBCO BPM Enterprise software can also automatically activate these activities upon meeting the specified preconditions.

Analytics = Reporting + Business Intelligence

TIBCO Spotfire analytics helps you uncover insights, predictive views, and the questions you want answered. By connecting Spotfire software to TIBCO BPM Enterprise data you get immediate actionable insights for activities, such as predictive work loads and distribution forecasts, or predictive service level agreement (SLA) management analytics and prioritization.



User Experience

One Model, Multiple Channels

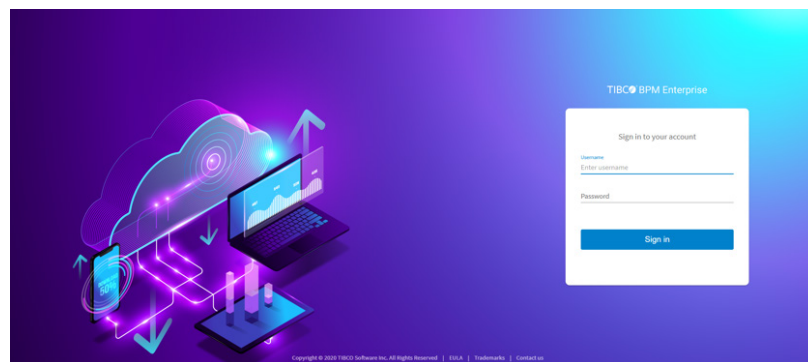
Design user forms and interface functionality once and deploy it to multiple destinations. The same model automatically adapts to all of the selected user interface channels. User forms can be created automatically from the data definitions. They can conform exactly to the definitions, be completely custom, or anywhere in between.

Singular Inbox

Many workers participate in more than one process in an enterprise. TIBCO BPM Enterprise software provides broad views and information in a single inbox or work list that these workers need for adhering to many processes.

Flexible User Interface and Open API

TIBCO BPM Enterprise software offers a modern, unified user interface (UI) and Open APIs to adjust to your environment and accommodate your requirements.



User Interface

The out-of-the-box client user interface provides a unified user experience for end users, allowing them to perform a range of operations related to process, work, and case management as well as administration, audit, and API exploration. An embedded forms renderer gives your applications the flexibility and agility of DPA. TIBCO BPM Enterprise software does all the forms rendering for your client, which allows UI changes to be quick and painless. Custom control libraries can also be used in design and runtime. You can use popular control libraries to keep your corporate look and feel consistent.

Open APIs

The BPM software is also accessible through its full-service RESTful APIs that are designed using the Open API Specification.

Supported Platforms and Standards

Container Platforms

- Docker Compose (Development)
- CNCF Certified Kubernetes (Production)

Standards

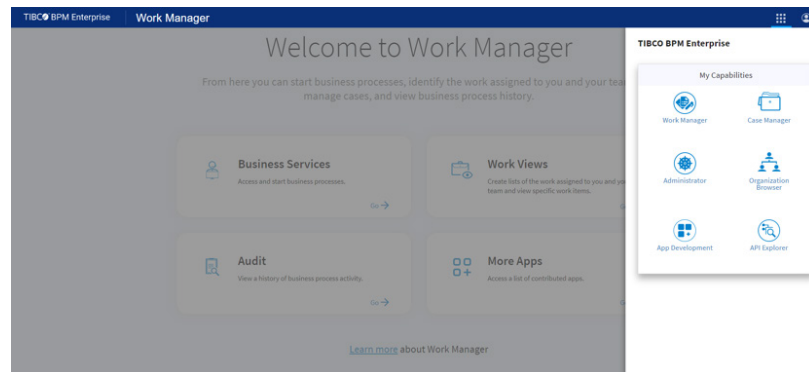
- BPMN
- XPDL
- UML
- Javascript

Single Sign On

- SAML Web Profile
- OpenID Connect

Databases

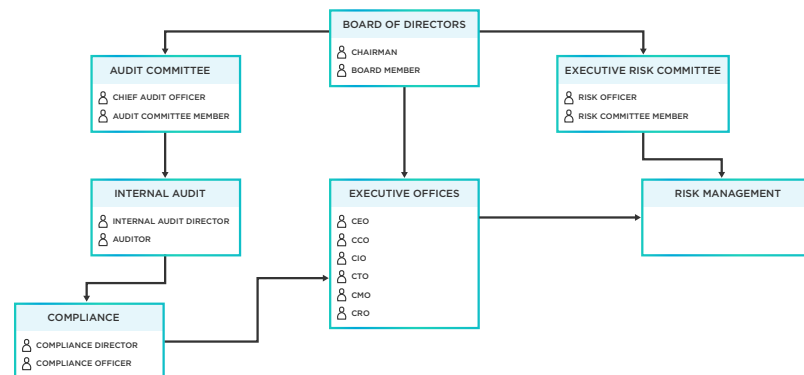
- PostgreSQL



The Power of the Organizational Model

Organizational models are a powerful and unique feature that allow business managers to change their organization with immediate effect. Organizational models support:

- Skills-based routing (For example, “I need someone who speaks French.”)
- Privileges/authorizations (For example, “I need someone who is HL7 certified.”)
- Teams, virtual teams, and ad-hoc teams
- Roles
- Relationships
- Locations
- Elastic organization for expandable businesses



Global Headquarters
 3307 Hillview Avenue
 Palo Alto, CA 94304
 +1 650-846-1000 TEL
 +1 800-420-8450
 +1 650-846-1005 FAX
 www.tibco.com

TIBCO Software Inc. unlocks the potential of real-time data for making faster, smarter decisions. Our Connected Intelligence platform seamlessly connects any application or data source; intelligently unifies data for greater access, trust, and control; and confidently predicts outcomes in real time and at scale. Learn how solutions to our customers' most critical business challenges are made possible by TIBCO at www.tibco.com.

©2018-2020, TIBCO Software Inc. All rights reserved. TIBCO, the TIBCO logo, and Spotfire are trademarks or registered trademarks of TIBCO Software Inc. or its subsidiaries in the United States and/or other countries. All other product and company names and marks in this document are the property of their respective owners and mentioned for identification purposes only.

08Dec2020